

Heracles Prowess For Ascendancy



High Speed CNC Vertical Machining Centre

Heracles 33

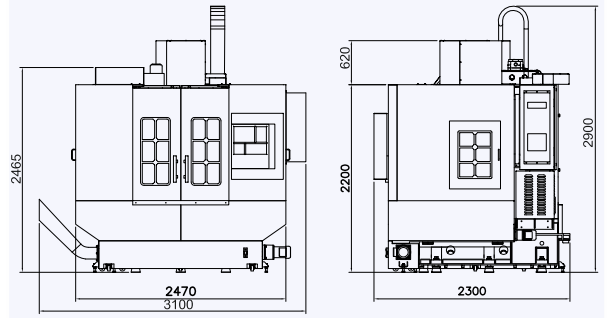


High Speed CNC Vertical Machining Centre **Heracles 33**

SPECIFICATIONS

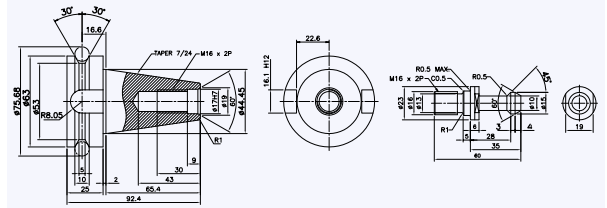
TABLE			
Table Size	mmxmm	1000	X510
Loading Weight, Max.	kg	800	
T-Slot (W x Nos. x P)	mm	18 x 5	x 100
TRAVEL			
X-Axis	mm	840	
Y-Axis	mm	510	
Z-Axis	mm	610	
Distance from Spindle Nose to Table Top	mm	150-760	
Distance from Spindle Center to Column	mm	600	
AXES			
Guideways (X, Y, Z Axes)		Linear Motion Roller Guides	
Rapid traverse (X, Y, Z Axes)	m/min	30 x 30 x 30	(36 x 36 x 36)
Cutting Feed	mm/min	18000	
SPINDLE			
Spindle Speed	rpm	8000/12000	
Spindle Power (Short/Continuous Duty)	kw	15/11	
Spindle Bore Taper		ISO40	
AUTOMATIC TOOL CHANGER			
Type of ATC		Twin Arm-Disc	
No. of Tools (Std./Opt.)	nos.	24/40/60	
Tool Shank		BT40	
Tool Diameter, Max.			
-with Adjacent Pockets Empty	mm	150	
-with Adjacent Pockets Full	mm	75	
Tool Length, Max.	mm	250	
Tool Weight, Max. (Std.)	kg	8	
(Opt.)	kg	-	
Tool Change Time (Tool-to-Tool)	sec	2.5	
Tool Selection Method		Random	
Pull Stud Type		MAS 407 (BT)	
ACCURACIES			
Positioning Accuracy	mm	+/-0.005	+/-0.010
Repeatability	mm	0.0025	0.005
MACHINE SIZE & POWER (Std.)			
Length	mm	3000	
Width	mm	2300	
Height	mm	2900	
Weight	kg	6450	
Power Consumption	kva	30	
Pneumatic Supply	bar	6	
CONTROL			
CNC System		Fanuc-Oi-MF	
Axis Servo Drive & Motor		Fanuc-βis	
Spindle Servo Drive & Motor		Fanuc-βil	

MACHINE DIMENSIONS



TOOLING SYSTEM

ISO-40 (BT-40) TOOLING SYSTEM



HIGHLIGHTS OF Heracles 33

STANDARD FEATURES

- Precision Linear Motion Guides for X, Y and Z Axes
- Rigid Tapping
- Spindle Air Blast
- Pre-Tensioned Ball Screws for all axes
- Panel Cooler for Electrical Cabinet
- Fully Enclosed Splash Guards
- Pneumatic System

OPTIONAL FEATURES

- Spindle Oil Cooler
- Coolant Through Spindle
- Auto Tool Length Measurement
- Work Piece Measurement
- Linear Scales
- High Pressure Coolant Pump
- 4 th and 5 th Axes Rotary Table Unit

OTHER PRODUCTS

- CNC Turn-Mills
- CNC Twin Spindle Lathes
- CNC Sliding Head Swiss Automats
- CNC Multi-Tasking Turn-Mills
- CNC Integrated Turn-Mill cum Machining Centres
- CNC Vertical Machining Centres
- High Speed CNC Drill-Tap Centres
- Robotic Automation
- Agile Loaders
- Unmanned Factory Production Lines

As upgradation is a continuous process, the specifications are subject to change without notice and all accessories shown are not part of standard feature



GALAXY MACHINERY PVT. LTD.
#79/2, Jnanodaya School Road,
Shankarpuram, Bangalore 560 004.

Manufacturing Unit at : Belgaum

Phone: +91 80 2662 5770
+91 80 2662 5771
+91 80 2662 5772

www.galaxymachinery.com

sales@galaxymachinery.com
service@galaxymachinery.com
spares@galaxymachinery.com

Ahmed Nagar : +91 93710 95343
Ahmedabad : +91 76249 57343
Aurangabad : +91 98227 68958
Bangalore : +91 73495 00353,
+91 76249 62353,
+91 76249 56353
Belgaum : +91 90084 35353

Bhiwadi : +91 93111 95343,
+91 78990 45343
Chennai : +91 72590 35353
Coimbatore : +91 93622 45353,
+91 73489 53343
Delhi : +91 88827 25353,
+91 97294 05060

Faridabad : +91 97294 05060
Hosur : +91 73058 45353
Jaipur : +91 97294 05060,
+91 93111 95343
Jamshedpur : +91 93422 04343,
+91 93348 04275
Jaysinghpur : +91 84211 27127

Kolhapur : +91 84211 27127
Ludhiana : +91 97409 21343
Mumbai : +91 98207 35006
Puducherry : +91 72590 35353
Pune : +91 95919 95353,
+91 93710 95343
Rohtak : +91 97294 05060
Vadodara : +91 73491 16353